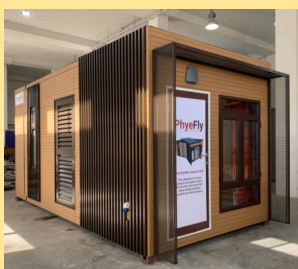


PhyeFlyTM

Tiny Timeless Home



几个世纪以来，对房屋的需求一直在增加。建造更多房屋以满足世界不断增长的人口需求。一代又一代，不断增长的人口继续增加住房建设速度的压力。如今，模块化外壳率先以最前沿的方式满足这些需求。

“PhyeFly”模块化住宅为世界带来了一种小而罕见但又独特而永恒的家居主义魅力，具有灵感的艺术性和创新的视野。270平方英尺的模块化住宅配有齐全的设施。开放式厨房高效地融入温馨的起居区，现代化的卧室配有时尚现代的卫生间。

PhyeFly凭借卓越的创新，在应对当今的建筑挑战方面脱颖而出。扩展模块的旋转运动为卧室，卫生间和其他设施提供了额外的空间。这是真正的现代杰作。

PhyeFly在抵达后几分钟内即可入住。卸载模块并将其放置到位，然后快速连接到事先准备好的所有必要的外部服务。无需进一步的建设和翻新工程。室内设施齐全，配有家具和家具。

PhyeFly将继续为世界解决21世纪的住房需求。



PhyeFlyTM

Tiny Timeless Home



For centuries, the demand for homes has been increasing. More homes are built to meet the needs of the world's growing populations. Generation after generation, growing populations continue to add pressure to the speed of home construction. Modular housing today takes the lead in meeting those demands in the most cutting-edge way.

The 'PhyeFly' modular home brings to the world a small and rare, yet unique and timeless glamour to home ownership with an inspired artistry and an innovative vision. **A 270 square feet** modular home comes with full amenities. An open kitchen is efficiently blended into an intimate living area, and the modern bedroom comes paired with a toilet of sleek and contemporary design.

The PhyeFly stands out in meeting today's architectural challenges with remarkable innovation. **The swivel motion of the extended module provides additional space for a bedroom, toilet and other amenities. This is the true modern masterpiece to live in.**

The PhyeFly is ready for occupation within minutes on arrival. The module is unloaded and placed in position, and then quickly connected to all the necessary external services that have been prepared beforehand. No further construction and renovation work is required. The interiors are fully finished and equipped with furniture and furnishings.

The PhyeFly will continue to serve the world solving housing needs in the 21st century.

PhyeFlyTM

Tiny Timeless Home



Compact Position



Mobile & Easy



The **PhyeFly** modular home uniquely extends its space by a quick swivel action working on a single pylon structure which carries the entire cantilevered extension of spaces. The added floor area and volume bring out a comfortable bedroom and bathroom with superior furnishings, while within, it is internally equipped with a living area and a cosy kitchen to blend the lifestyle needed for this home.

Thinking “small” but yet luxurious, the **PhyeFly** brings joy and satisfaction to live in. This is the legacy for the 21st century for all.

Fully extended position





PopUp homes
Living in Harmony

PopUp Homes - Boutique Hotel Development



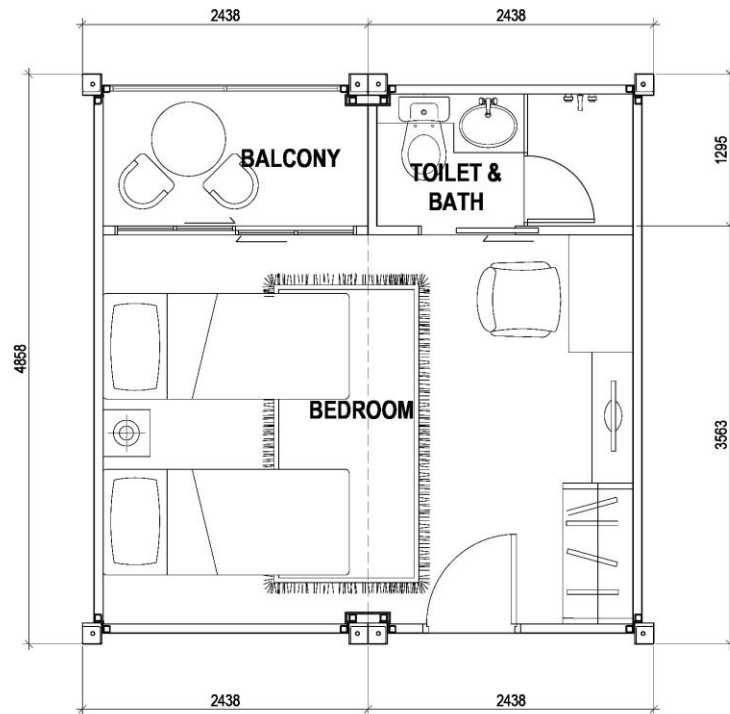
Boutique hotel development using PopUp modular rooms are built faster than any 'wet construction system'. They are fully finished, furnished and ready in the factory before delivery to the site for installation. These rooms are installed on site rapidly and ready for occupation when power and water are turned on.





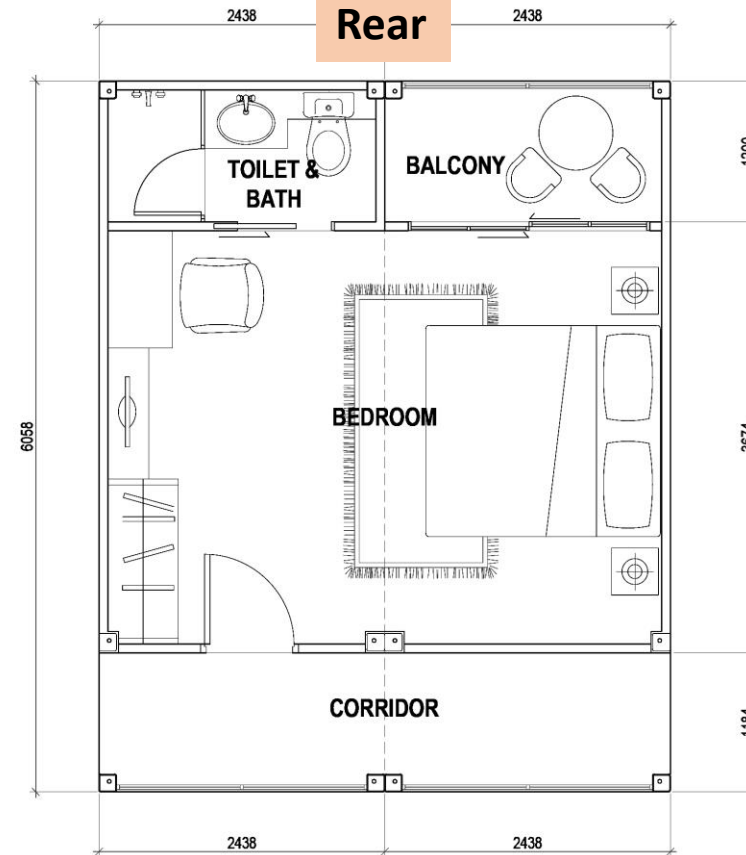
PopUp homes
Living in Harmony

PopUp Homes - Boutique Hotel Development



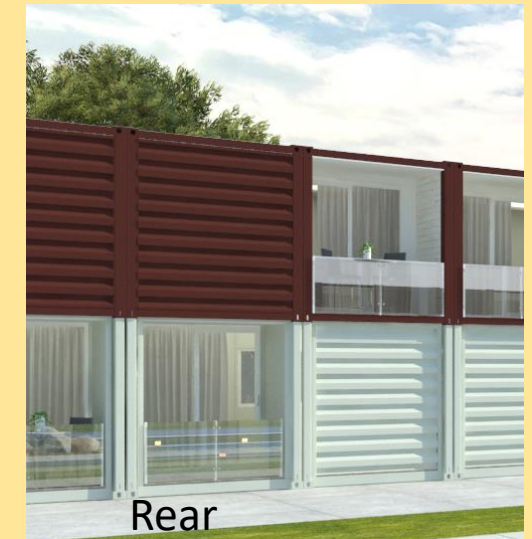
Front

 **LOWER MODULE - FLOOR**
SCALE: 1: 50 M



Rear

 **UPPER MODULE - FLOOR**
SCALE: 1: 50 M





PopUp homes
Living in Harmony

PopUp Homes **Two bedroom Apartment 620 sq ft**



PopUp Two Bedroom Apartment – 620 sq ft

Includes:

Kitchen: Cabinets, Gas-hop, Hood and kitchen Sink.

Bathroom: wash basin with cabinet, w.c, shower cubicle, all taps and accessories

Staircase: Steel staircase with stainless steel cable railing and timber risers.





PopUp homes
Living in Harmony



Three Bedroom 950 square Feet

PopUp Homes
Model: Famili88





Solitaire
space within a space



Solitaire F&B Gourmet Park – 40 F&B Outlets

